

PacketV™ Player



Visionary Solutions, Inc.

©2008 Visionary Solutions, Inc. All rights reserved.



Visionary Solutions, Inc.

About This Guide

VSI recommends that you download the most recent version of this Manual from www.vsicam.com.

Legal Considerations

PackeTV™ Player End User License Agreement (EULA)

The PackeTV™ Player is licensed, not sold. An AVN unit includes one or more End User License Agreement(s) and may include an optional User Access License Agreement granting the purchaser of a unit non-exclusive rights to install and use the PackeTV™ Player on a single computer decoder license. The installation of more than three decoder licenses is prohibited. Use of the PackeTV™ Player is subject to the terms and conditions of the PackeTV™ Player EULA.

Any unauthorized copying, decompiling, reverse engineering, or re-engineering the PackeTV™ Player Software is strictly prohibited. The PackeTV™ Player is protected by copyright laws and international treaty provisions. Therefore, you must treat the PackeTV™ Player like any other copyrighted material, except that you may either (a) make one copy of the PackeTV™ Player solely for backup or archival purposes, or (b) install the PackeTV™ Player on a single computer, provided that you keep the original solely for backup or archival purposes. You may not copy the printed materials accompanying the PackeTV™ Player.

Refer to the PackeTV™ Player EULA at the beginning of the install procedure for important terms and conditions.

To purchase additional licenses, go to www.vsicam.com, contact Visionary Solutions, Inc., or contact your Visionary Solutions, Inc. reseller.

Intellectual Property Rights

Visionary Solutions, Inc. warrants that it, or its licensors, have good and clear title or right to license the PackeTV™ Player and its components and to manufacture and distribute an AVN, free and clear of all liens and encumbrances.

No part of this document may be copied or reproduced in any form or by any means, electronic or mechanical, for any purpose without the express written permission of Visionary Solutions, Inc.

All rights, title, copyrights in and to the design, firmware object and source code of the an AVN belong exclusively to and are the property of Visionary Solutions, Inc.

All rights, title, and copyrights in and to the PackeTV™ Player and any copies of the PackeTV™ Player belong exclusively to and are the property of Visionary Solutions, Inc.

Visionary Solutions, Inc., subject to the terms and conditions of an agreement with the Licensing Administrator MPEG LA, L.L.C., has been granted sublicense under all MPEG-2 Essential Patent(s) in the MPEG-2 Patent Portfolio to make, have made, use, and sell, offer for sale or otherwise distribute PackeTV™ Player (MPEG-2 Decoding Software) and the AVN unit (MPEG-2 Transport Stream Product).

ANY USE OF THIS PRODUCT OTHER THAN CONSUMER PERSONAL USE IN ANY MANNER THAT COMPLIES WITH THE MPEG-2 STANDARD FOR ENCODING VIDEO INFORMATION FOR PACKAGED MEDIA IS EXPRESSLY PROHIBITED WITHOUT A LICENSE UNDER APPLICABLE PATENTS IN THE MPEG-2 PATENT PORTFOLIO, WHICH LICENSE IS AVAILABLE FROM MPEG LA, L.L.C., 250 STEELE STREET, SUITE 300, DENVER, COLORADO 80206.

Limited Liability

In no event shall Visionary Solutions, Inc. be liable, whether in contract, tort, or otherwise, to OEM or Customers for (a) any damages resulting from loss of use, data or profits howsoever arising hereunder in relation to or in connection with Visionary Solutions, Inc. Software, (b) any special, indirect, incidental or consequential damages, even if Visionary Solutions, Inc. has been advised of the possibility thereof. Visionary Solutions, Inc.'s total liability in contract, tort or otherwise arising out of, in connection with or in relation to the Software or otherwise under this Agreement shall be limited to the amount paid to Visionary Solutions, Inc. or and authorized Visionary Solutions, Inc. reseller for the Visionary Solutions, Inc. Software or Hardware for a Customer in the 12 month period immediately preceding the event which has given rise to the liability.

The contents of this document are subject to revision without notice due to continued progress in methodology, design, and manufacturing. Visionary Solutions, Inc. shall have no liability for any error or damages of any kind resulting from the use of this document.

Trademark Acknowledgements

All trademarks or registered trademarks are properties of their respective owners.

Visionary Solutions, Inc.
4193 Carpinteria Ave
Suite 11
Carpinteria, CA 93013
T:805-566-5811
F:805-566-5813
www.vsicam.com

PackeTV™ Player User's Manual
March 13, 2008
Release 1.0.1

Contents

Chapter 1 Installing PackeTV™Player	1
1.1 Introduction	1
1.2 Software Installation	1
1.3 Registration	2
Chapter 2 Using PackeTV™ Player	5
2.1 Running Multiple Instances of PackeTV™ Player	5
2.2 Recording Streaming Video	5
2.3 Playing Recorded Files Using PackeTV™ File Player	7
Chapter 3 PackeTV™ Player Menus	8
3.1 PackeTV™ Player Options Menu	8
3.2 Active Channel and List Management Menu	9
3.3 Channels Menu	11
3.4 View Menu	11
3.5 Media Menu	12
3.6 Control Menu	13
3.7 Setup Menu	14
3.8 Help Menu	15
3.9 Channel Toolbar	15
3.10 PackeTV™ File Player Controls	16
3.11 Command Line Options	17
Glossary of Terms	18

Chapter 1 Installing PackeTV™Player

1.1 Introduction

PackeTV™ Player is a "client" application that works in conjunction with Visionary Solutions Inc. (VSI) IPTV hardware and PackeTV™ Manager. PackeTV™ Player is a simple application for use by IPTV "customers" on the network who just wish to channel surf and play/record files.

PackeTV™ Player requires a valid PackeTV™ channel list file (.ptv), created using PackeTV™ Manager, in order to obtain its viewable channels. In this way, PackeTV™ Manager controls the content of PackeTV™ Player.

PackeTV™ Player includes an MPEG-2 standards compliant decoder, which enables users to view an AVN2XX generated stream/channel from a Windows based PC. Channels may also be recorded to a file (.mpg file) for later viewing. A full featured MPEG-2 file player is included, which enables the playback of previously recorded channels/streams (.mpg files). Numerous viewing options, including auto launch last channel, configurable window size/placement per channel, Always On Top, MPEG-2 decoder property management (I Frames only), and volume control are also supported.

This chapter provides instructions on installing the software; Chapter 2 provides instructions on using the Player; Chapter 3 provides additional information on the Player menus and dialogs.

1.2 Software Installation

Note: *All hardware connections should be in place before you start the PackeTV™ Configuration Utility.*

To install the software:

1. Close all Windows programs prior to starting the setup program.
2. **Installing PackeTV™ Player from the CD.** If autorun is enabled, the CD will automatically launch the installation. If autorun is not enabled, explore the contents of the CD and double click **VisionarySolutionsSoftwareAndDocumentationSetup.exe** to begin installation.
3. **Downloading PackeTV™ Player.** If the CD is not available, you can download the install file **VisionarySolutionsSoftwareAndDocumentation Setup.msi** from the web. Go to www.vsicam.com/index.php?p=iptv_updates.

If the target PC does not have internet access, go to the Backup Install folder on the CD and select the install file, **VisionarySolutionsSoftwareAndDocumentationSetup.msi**. Note that the CD install file is likely to be older than the version available from the web with the **VisionarySolutionsSoftwareAndDocumentationSetup.exe**. Internet access is required to get the most current version of the PackeTV™ Player.

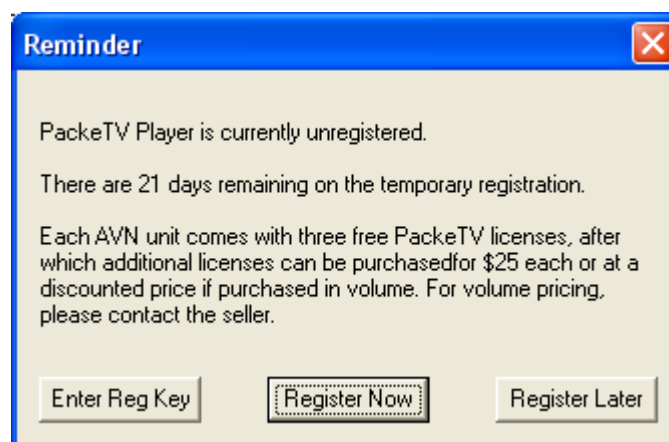
4. **The PackeTV™ Player Installation Wizard.** Read the Welcome page and click **Next**.
5. **Select Features.** Select/check PackeTV™ Player. The PackeTV™ Configuration Utility is required and will also be selected. Click **Next**.
6. **Software License Agreement.** Read the Software License Agreement. If you accept the terms of the license, select "I accept the license agreement" and click **Next** to proceed. If you do not accept the terms, click **Cancel** to exit the installation; no files will be copied.
7. **Destination Location.** Choose where you would like to install PackeTV™ Player files. By default, the files will be installed in a directory named Visionary Solutions in the Program Files directory. Click **Next**.
8. **Start the Installation.** Click **Next** to begin installation.
9. **PackeTV™ Player Successfully Installed.** Click **Finish** to exit the installation.

1.3 Registration

Each AVN200 unit comes with three free player licenses. Additional licenses can be purchased for \$25 per license or at a discounted price if purchased in volume. For volume pricing of PackeTV™ Player licenses, please contact avnsales@vsicam.com.

You may use PackeTV™ Player for a 21 day trial period without registering. In order to use PackeTV™ Player after the trial period, you will need to register your Player with VSI. If the registration process is interrupted for any reason, you can click the Cancel button, when present, and return to complete the process at a later time.

1. Launch the PackeTV™ Player application and select one of three options, each of which are explained in the following paragraphs: Enter Reg Key, Register Now, or Register Later.



2. **Enter Reg Key.** In order to register, click the **Enter Reg Key** button. You must have already received a PackeTV™ Player registration key through the Visionary Solutions, Inc. website. For instructions on generating PackeTV™ Player registration keys, refer to step 3.

- a. **Enter Registration Key.** Enter your Username and Registration Key values. These values must match the information from vsicam.com's Registration page when you generated your registration key or your confirmation email.
- b. **Valid Key.** A pop-up dialog box will appear to confirm registration. Click **OK** to launch PackeTV™ Player.

If a data entry error is detected, a pop-up dialog box will appear prompting you to re-enter the data. Click **OK** to return to the Enter Registration Key pop-up dialog box. You can refer back to your confirmation email and copy and paste the Username and Registration Key values into the Enter Registration Key dialog box. Click **OK** to complete the registration and launch PackeTV™ Player.

3. **Register Now.** If you have not registered your PackeTV™ Player application and do not yet have your Username and Registration Key values, click the **Register Now** button.
 - a. **Hardware Fingerprint.** The Hardware Fingerprint value is shown in an edit box. To learn more about the Hardware Fingerprint value, click the **Info** button. This value will be automatically pasted into the correct edit field in the vsicam.com Register page once you are logged into your account. Click the **Continue** button. You will be directed to www.vsicam.com.
 - b. **Login** to your account or create one if you are a new user. After logging in, you will be directed to the PackeTV™ Player Registration system. The Fingerprint value should already be present in the edit field.
 - c. **Enter a Username** for this registration key and determine the payment method. If you have free PackeTV™ Player registration licenses associated with a specific product/serial number, leave the **Register Using Product/Serial #** checkbox selected and you will be asked for this information on the next page. Otherwise you can use any existing registration license purchased through the shopping cart by deselecting this box. Click the **Continue with Registration** button.
 - d. **Registration page two.**
 - I. If the **Register Using Product/Serial #** checkbox from the first page is selected, enter the product information (Type, Serial Number, and Registration Number) associated with the product you are registering against and click the **Generate Registration Key** button. If the indicated product has an available license, then a registration key will be generated and displayed on the page along with the username. A Product Registration confirmation email containing all registration information and instructions will also be sent.
 - II. If the **Register Using Product/Serial #** checkbox from the first page was NOT selected and you have an existing registration license associated with your account (purchased through the shopping cart), a registration key with a Username will be generated and displayed near the top of the page. A Product Registration confirmation email containing all registration information and instructions will also be sent.

Note: *All registration information associated with your account will be saved and available for viewing at a later date. When logged in to your vsicam.com account, click on the **Product Registration** option in the Login area or on your My Account page.*

- e. **Copy the Registration Key value** from the Registration page or your confirmation email and remember your Username. These two pieces of information are used in step “g.” below. You can leave the vsicam.com Registration page open on your desktop (minimize the page if needed), for reference.
 - f. **Click the Enter Reg Key button.** If you wish to launch PackeTV™ Player instead of registering now, click the **Start Player** button. If you elect to finish your registration at a later time, do so by using the **Enter Reg Key** button on the Reminder dialog box, which will appear the next time you launch PackeTV™ Player (see step 2).
 - g. **Enter Registration Key.** Enter your Username and Registration Key values. If needed, you can refer back to the Registration page or confirmation email to copy and paste your Username and Registration Key values.
 - h. **Valid Key.** A pop-up dialog box will appear to confirm registration. Click **OK** to launch PackeTV™ Player. If a data entry error is detected, a pop-up dialog box will appear prompting you to re-enter the data. Click **OK** to return to the Enter Registration Key pop-up dialog box. You can refer back to the Registration Summary page and copy and paste the Username and Registration Key values into the Enter Registration Key dialog box. Click **OK** to complete the registration and launch PackeTV™ Player.
4. **Register Later.** Click the **Register Later** button to bypass the registration and launch PackeTV™ Player. You can register right away or opt to register up to 21 days after installing the player. If you decide to register later, you will be prompted to register PackeTV™ Player at startup until you have done so or until 21 days have expired.

Chapter 2 Using PackeTV™ Player

The PackeTV™ Player is a “client” application that works in conjunction with Visionary Solutions, Inc. (VSI)’s IPTV hardware and PackeTV™ Manager. This is a simple application for use by IPTV “customers” on the network. Channel surf, play files, and record DVD quality video and audio (MPEG-2, 30fps) files or streams on a Windows-based PC.

Use PackeTV™ Manager to setup the channel list file (.ptv) accessible to PackeTV™ Player clients. Once a valid .ptv file has been loaded by the player, simply select from the available channels and begin viewing. In this way, what the player is able to decode/view is entirely dependent upon .ptv files, which in turn is controlled by the PackeTV™ Manager.

2.1 Running Multiple Instances of PackeTV™ Player

There are no restrictions on the number of PackeTV™ Player instances that can be run on a single client PC at any given time. Limiting factors, if any, would potentially be the system resources available on the client PC, i.e., memory, CPU, etc.

One way to dramatically reduce the demand for system resources, if desired, is to configure PackeTV™ Player to decode only the I Frames of the video streams.

An MPEG-2 stream is made up of Intracoded Frames (I Frames), Predicted Frames (P Frames), and Bidirectional frames (B Frames). I Frames are pictures that are coded by using information present only in the picture itself and that do not depend on information from other pictures. P Frames and B Frames are coded with information that is dependent upon frames that come after and/or before the current frame. I Frames, then, are complete pictures while P and B Frames are not. P and B Frames help make the rendered MPEG-2 stream appear smoother to the human eye but also require more decoding, which increases the demand on the PC's CPU. So there is a trade off between picture/stream quality and CPU utilization. Decoding I Frames only is much easier for the PC but does not look as good to the player.

To change the decoding properties of the video stream to I Frames:



1. Launch PackeTV™ Player and click **Media> Video Properties**.
2. From the MPEG-2 Video Decoder Properties dialog box, select the **Settings** tab.
3. In the Performance Group, select **Decode I Frames only** then click **OK**.

2.2 Recording Streaming Video

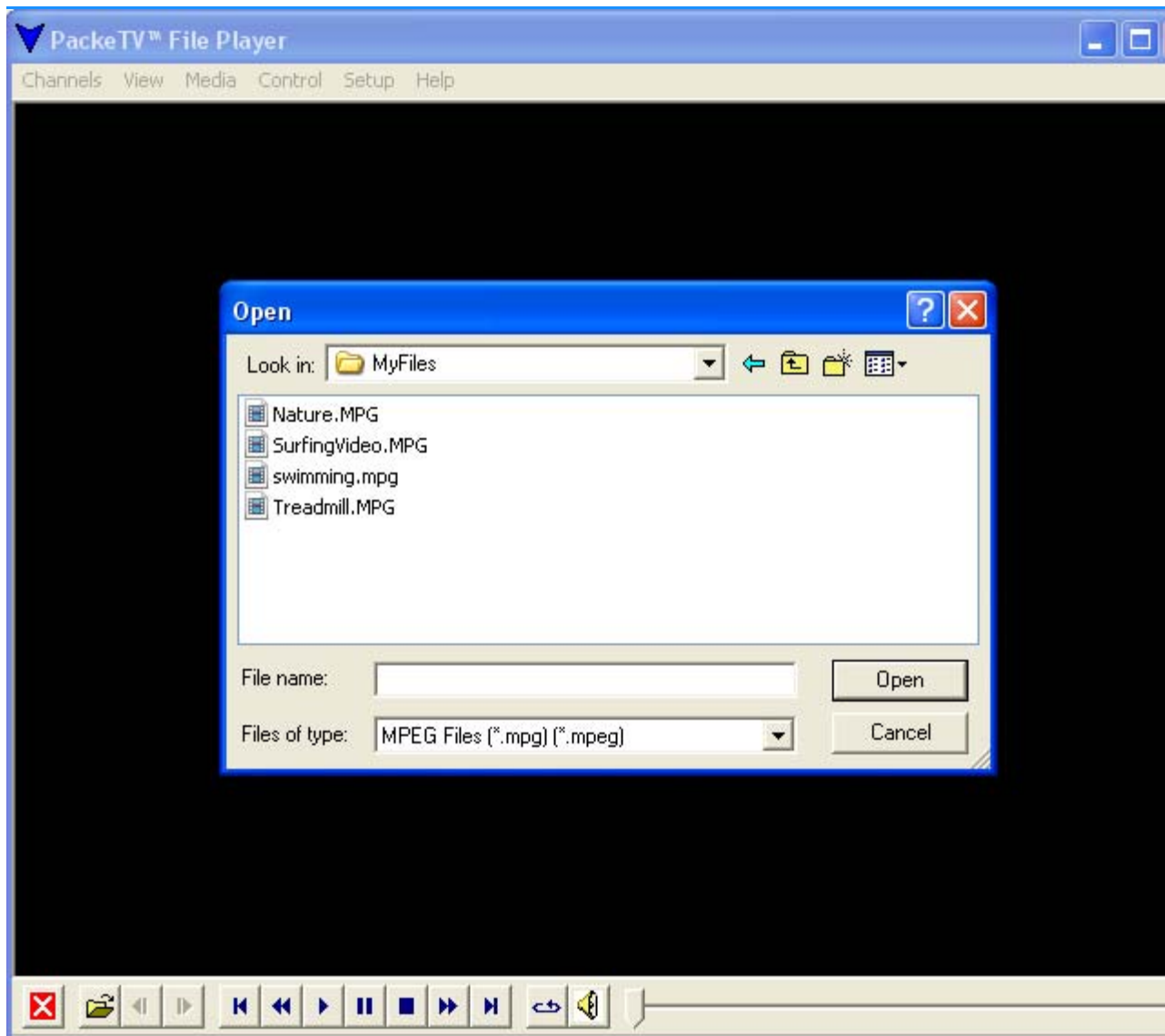
The recording feature enables the easy capture of streaming video from an open channel to a predefined directory. The filename is generated automatically based upon a concatenation of the date, time, and channel name. Every time that a recording is started, a new file is created and placed in the predefined directory.

Before you can record a file, you must first define a record directory. Refer to section 3.7 *Setup Menu, Edit Default Record Directory*.

To record an open channel, follow these steps:

1. Define a record directory. From the PackeTV™ Player menu bar, click **Setup> Edit Record Directory**.
2. Start recording one of three ways:
 - a. Go to the PackeTV™ Player menu bar, click **Control> Start/Stop Recording**;
 - b. Click on the  button (Record) on the toolbar; or
 - c. Double right-click on the viewing area. Double right-clicking starts AND stops the recording.
3. Stop recording one of three ways:
 - a. Go to the PackeTV™ Player menu bar, click **Control> Start/Stop Recording**;
 - b. Click on the  button (Stop) on the toolbar; or
 - c. Double right-click on the viewing area.
4. A new file will be created and placed in the specified directory each time a recording is started.

2.3 Playing Recorded Files Using PackeTV™ File Player



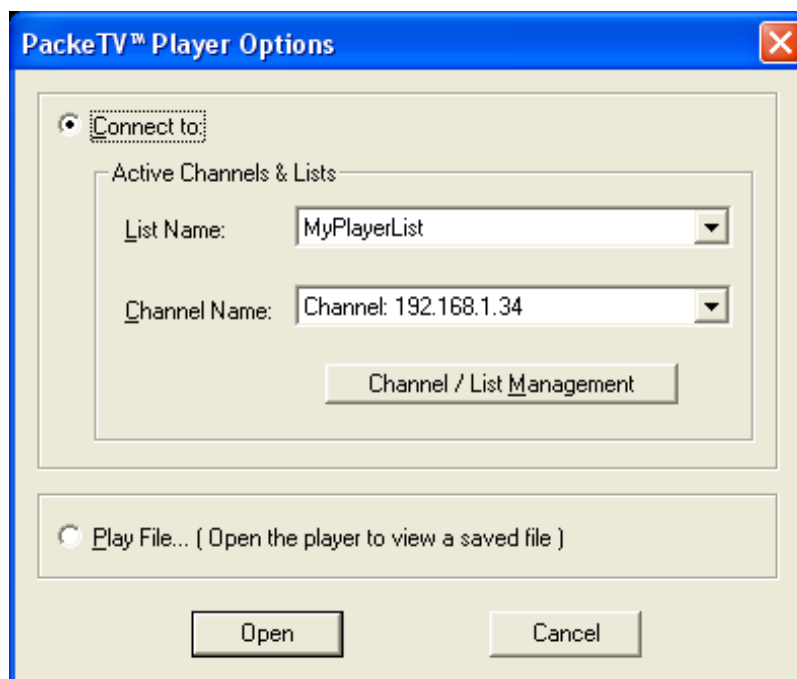
1. Launch the PackeTV™ File Player.
2. From the main menu, click **Control> Play Recorded File**, or from the Options dialog, select the **Play Recorded File** button and click **OK**.
3. By default, the PackeTV™ File Player starts with the Open File dialog displayed.
4. Select the recorded file that you want to play and click **Open**.
5. Once the file is loaded, click the **Play** button.

Chapter 3 PackeTV™ Player Menus

This chapter provides additional information on PackeTV™ Player menus.

3.1 PackeTV™ Player Options Menu

The PackeTV™ Player Options menu will display when the software is first launched or when the options menu is selected from the main Channel Menu. This dialog box allows you to connect to a loaded streaming channel, display the Channel / List Management dialog, or play an existing MPEG file through the PackeTV™ File Player.



Connect to:

Active Channels & Lists

List Name A drop-down box listing currently loaded channel lists.

Channel Name A drop-down box listing the channels in the currently selected list. The settings associated with the selected channel will be joined, if possible, when the Open button is pressed.

Channel / List Management

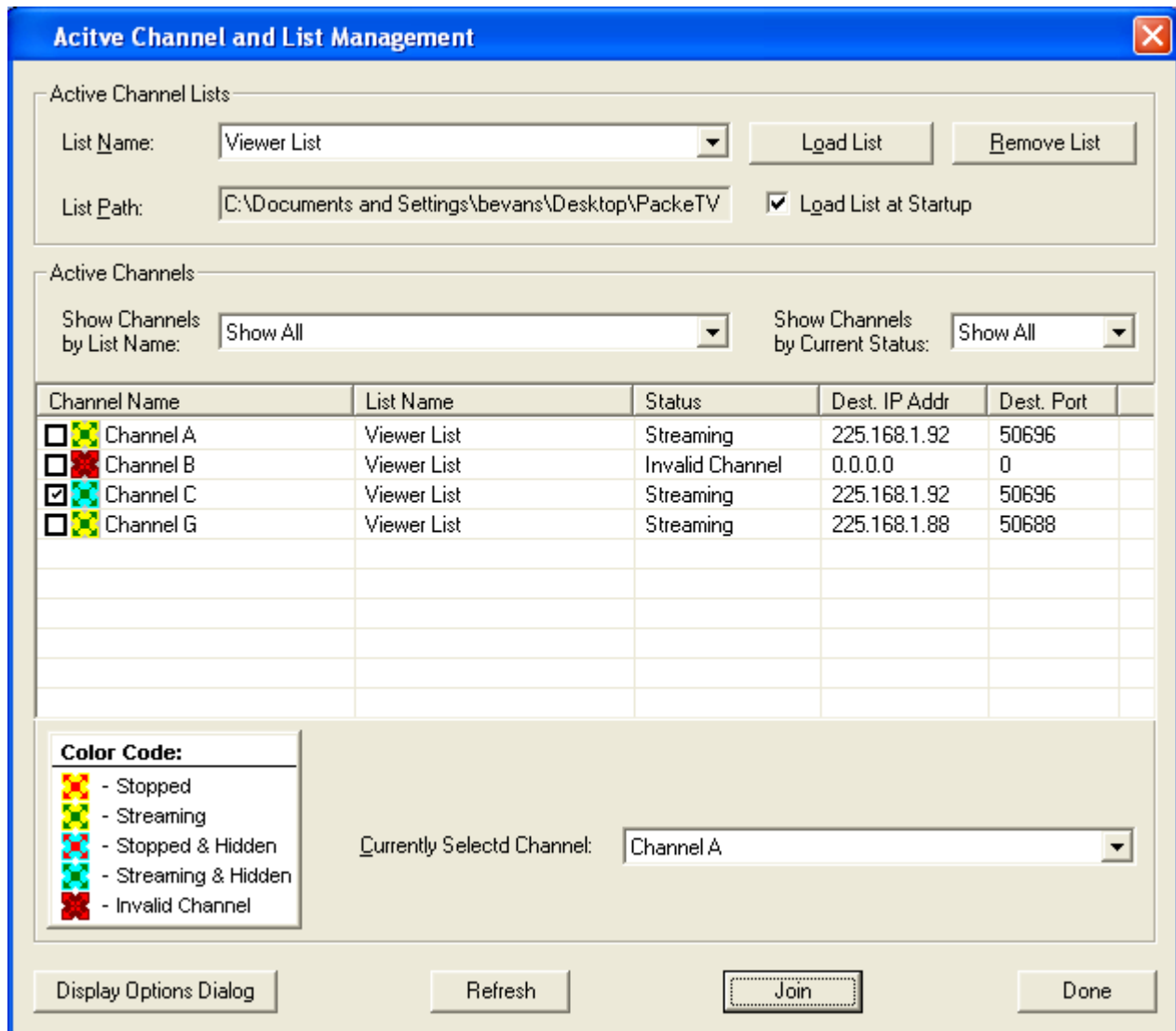
Add or remove channel lists and hide or show loaded channels, refer to section 3.2 *Active Channel and List Management Menu* for more information on channel and list management.

Play File Run a recorded stream or an existing MPEG file.

- Open** Opens the channel specified in the Channel Name drop-down box if possible. Only channels currently streaming may be opened.
- Cancel** Closes the Options dialog.

3.2 Active Channel and List Management Menu

The PackeTV™ Player Active Channel and List Management menu allows the user to load and remove channel lists, and show or hide any loaded channel(s) on a list. Hidden channels cannot be opened and will not show on any streaming lists. This is an easy way to narrow down lists to only desired channels.



Active Channel Lists

List Name A drop-down list listing currently loaded channel lists.

List Path	A field showing the full path to the currently selected channel list.
Load List	The Load List button opens a browser dialog which enables the user to select and load a channel list file. All channel list files have a “.ptv” extension.
Remove List	The Remove List button removes the selected channel list from the PackeTV™ Player's active lists.
Load List at Startup	When this box is checked, the channel list will be loaded automatically into the active lists when PackeTV™ Player starts.

Active Channels

Show Channels by List Name

A drop-down box allowing the selection of which channels will be displayed in the main channel list. Using this option you can view channels according to their list's name. By default the selection is Show All which displays all the channels in all the active channel lists.

Show Channels by Current Status

A drop-down box allowing the selection of which channels will be displayed in the main channel list. Using this option you can view channels according to their current status (Stopped or Streaming). By default the selection is Show All which displays both stopped and streaming channels.

Main Channel List This list displays all the channels according to the selection criteria (see Show Channels by List Name and Show Channels by Current Status above).

Each channel has the following information displayed: Channel Name, List Name, Status, Destination IP Address, and Destination Port.

Color Code A legend for the color icons.

Currently Selected Channel

A drop-down box listing all the active channels and allowing the selection of the current channel. The currently selected channel will be the one used when the **Join** button is selected.

Display Options Dialog

Closes the Active Channel and List Management Menu and opens the Options Menu. Refer to section 2.1.

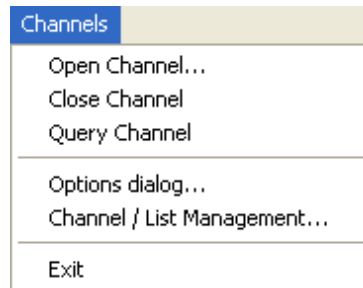
Refresh Causes all the channel's on the main channel list to be queried and their settings (status, destination IP, etc.) updated.

Join Opens the channel specified in the Currently Selected Channel drop-down list. This button is disabled when the specified channel is not streaming.

Done Closes the Active Channel and List Management menu. This list displays all the channels according to the selection criteria (see Show Channels by List Name and Show Channels by Current Status above).

Each channel has the following information displayed: Channel Name, List Name, Status, Destination IP, and Destination Port.

3.3 Channels Menu



Open Channel Displays the Loaded Channels dialog box, which lists all the channels on the active channel lists that are currently streaming and can be joined.

Close Channel Closes the current PackeTV™ Player channel.

Query Displays the current channel's settings.

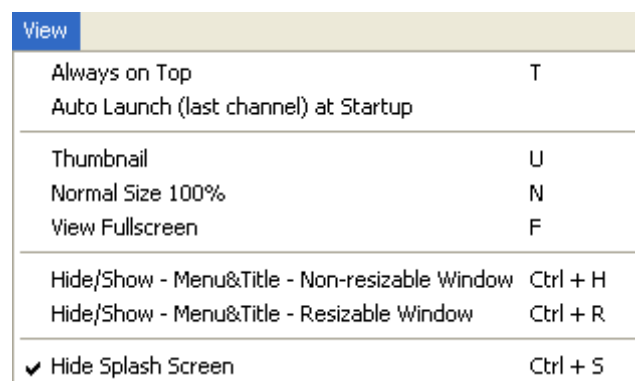
Options dialog Displays the Options dialog box, refer to section 3.1.

Channel List / Management

Displays the Active Channel List and Management menu, refer to section 3.2.

Exit Exits the PackeTV™ Player application.

3.4 View Menu



Always on Top Designates the viewing area window to be the top most window.

Auto Launch (last channel) at Startup

Allows the PackeTV™ Player to skip the initial Options dialog during startup and immediately begin rendering the last viewed channel.

Thumbnail Resizes the viewing area to its minimum size.

Normal Size 100% Resizes the viewing area to its default size.

View Full Screen Resizes the viewing area to its maximum size. To get out of the full screen viewing mode, press the **Esc** or **F** keys.

Hide/Show - Menu&Title - Non-resizable Window

Hides or displays the menu and title bars. When the menu and title bars are hidden, the window cannot be resized, effectively locking the window in place. To display menu and title bar again, press the **Esc** or the **Ctrl + H** keys.

Hide/Show - Menu&Title - Resizable Window

Hides or displays the menu and title bars. When the menu and title bars are hidden, the window can be resized. To display menu and title bar again, press the **Esc** or the **Ctrl + R** keys.

Hide Splash Screen Hides or displays the application's initial splash screen.

3.5 Media Menu



Audio Stats Displays the current audio statistics.

Video Stats Displays the current video statistics.

Network Stats Displays the current network statistics.

FEC Stats Displays the current Forward Error Correction (FEC) statistics.

Audio Properties Displays the Audio Properties dialog box.

Video Properties Displays the Video Properties dialog box. This dialog box allows the adjustment of picture brightness and other decoder settings.

3.6 Control Menu

Control	
Start/Stop Recording	R
Play Recorded File...	P
Play Last Recorded File	L
Volume...	V
Mute/Unmute	M
Start/Stop Auto Cycle Channels	Ctrl + Alt + S

Start/Stop Recording

This is a toggle selection that either starts or stops recording (refer to 2.2 *Recording Streaming Video*). When using Record, a filename will automatically be generated based on a concatenation of the date, time, and current channel name. You can also double-right click on the viewing area to start or stop recording.

Play Recorded File Opens the PackeTV™ File Player and a file browser, enabling a recorded .mpg file to be loaded and played. Refer to section 2.2 *Recording Streaming Video*.

Play Last Recorded File

Opens the PackeTV™ File Player and automatically loads the last recorded file. This option is disabled until a file has been recorded.

Volume

Displays a vertical slider for volume control and a checkbox at the bottom to mute the volume. The volume control adjusts the PackeTV™ Player volume only and not the volume of your PC.

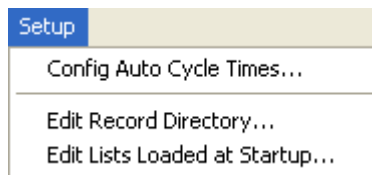
Mute/Unmute

Turns Audio, if present in the stream, On and Off.

Start/Stop Auto Cycle Channels

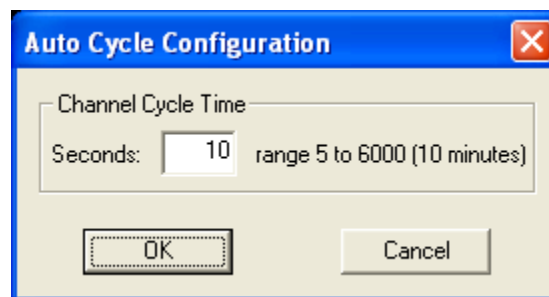
Selecting this option starts or stops the auto cycling of channels from the Currently Streaming list. When the Auto Cycle Channels option is started, each channel (in the Currently Streaming List) will be viewed for a specified time before "cycling" (changing) to the next channel. To configure the amount of time a channel is to be viewed before cycling, click **Setup> Config Auto Cycle Times**. Channel cycle times can range from 5 seconds to 10 minutes.

3.7 Setup Menu



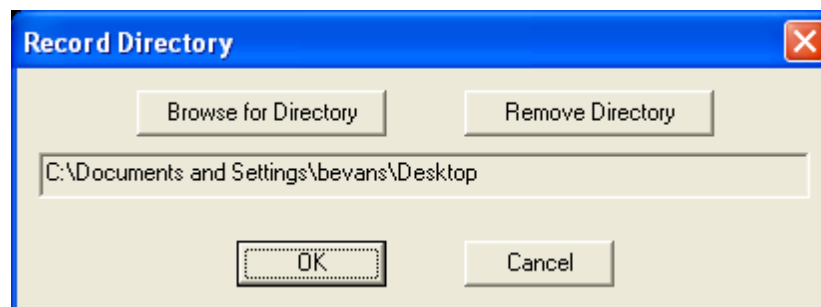
Config Auto Cycle Times

Selecting this option opens the Auto Cycle Configuration dialog, which allows the channel cycle time to be set from 5 seconds to 10 minutes.



Edit Record Directory

Launches a dialog box that allows you to view or modify the record directory where recorded files will be saved.



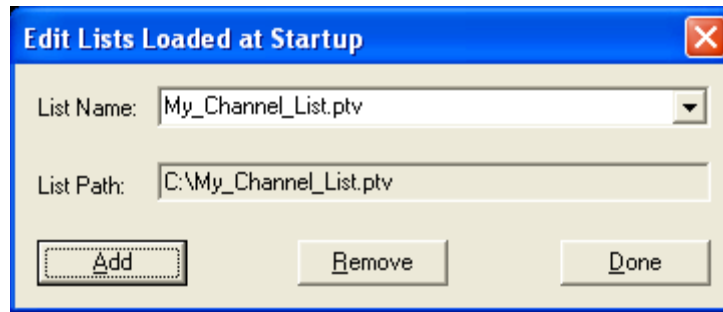
Browse for Directory – opens a directory browser.

Remove Directory – deletes the directory displayed in the dialog box.

Click **OK** to save changes or **Cancel** for the changes to not take effect.

Edit Lists Loaded at Startup

Launches a dialog box that allows you to view or modify the lists that PackeTV™ Player automatically loads upon startup.

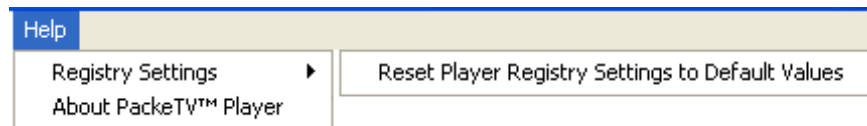


List Name – A drop-down box that displays all of the channel lists that will be loaded by PackeTV™ Player at startup.

List Path – Displays the path to the channel list specified in the List Name drop-down box.

Add, Remove, Done buttons – Use to add or delete lists and to exit the dialog.

3.8 Help Menu



Registry Settings **Reset Player Registry Settings to Default Values** – Sets all PackeTV™ Player registry settings to factory default values.

About PackeTV™ Player

Displays information about the PackeTV™ Player software.

3.9 Channel Toolbar

The channel toolbar consists of a channel drop-down list and controls as follows:



1. The **Up** and **Down** arrows change the "channel" to the next item in the list (up or down).
2. The **Auto Cycle** button cycles channels that are in the currently streaming list (Item 3).

3. The drop-down list displays all the currently streaming channels from all the active channel lists. This list does not include stopped channels.
4. The **Refresh** button causes the PackeTV™ Player to query all of the channels and determine their status (stopped, streaming, or not available).
5. The **Record** button starts a recording session (refer to section 2.2 *Recording Streaming Video*).
6. The **Stop** button stops a recording session (refer to section 2.2 *Recording Streaming Video*).
7. The **Volume** button displays a vertical slider for volume control and a checkbox at the bottom to mute the volume. The volume control adjusts the PackeTV™ Player volume only and not the volume of your PC.

3.10 PackeTV™ File Player Controls

Click on the following buttons to control the PackeTV™ File Player.



– Open file



– Skip Back



– Skip Forward



– Jump to Beginning



– Rewind



– Play



– Pause



– Stop



– Fast Forward



– Jump to End



– Repeat, continually plays the file until stopped.



– The Volume button displays a vertical slider for volume control and a checkbox at the bottom to mute the volume. The volume control adjusts the PackeTV™ Player volume only and not the volume of your PC.



– Positional Slider Bar

3.11 Command Line Options

You can start the PackeTV™ Player from the DOS command line prompt.

To use the command line option, you must type in the commands in the same folder that contains the **PackeTV_Player.exe** file. By default, this folder is **C:\Program Files\Visionary Solutions\PackeTV Player**.

There are two commands that you can enter:

1. To start the player with an automatically loaded channel, type the following at the command prompt:

Note: If the **loaded_channel_name** parameter contains spaces, it will need to be entered in quotes (*name:"loaded_channel_name"*).

```
PackeTV_Player.exe name:loaded_channel_name
```

The **loaded_channel_name** parameter must match a channel from a channel list that is loaded at startup (refer to the *Edit Lists Loaded at Startup* paragraph in *3.7 Setup Menu*). All channel settings will be used, including the "Hide Menu & Title" and previous window positioning/size.

2. To start PackeTV™ File Player, with a given file upon launch, type the following at the command prompt:

Note: If the **full_path_of_mpg_file_to_play**, parameter contains spaces it will need to be in quotes (*player:"full_path_of_mpg_file_to_play"*).

```
PackeTV_Player.exe player:full_path_of_mpg_file_to_play
```

The **full_path_of_mpg_file_to_play** parameter must be a valid path to an .mpg file.

Glossary of Terms

AAC	Advanced Audio Coding
AC	Alternating Current
AFF	Adaptive Frame/Field per Picture
AT	Active Tunnel
AUX	Auxiliary
AV	Audio Video
B Frames	Bidirectional Frames (pictures)
BNC	Bayonet Neill-Concelman (connector)
CCTV	Closed Circuit Television
CD	Compact Disc
cm	centimeter
CPU	Central Processing Unit
CVBS	Composite Video Broadcast Signal
DHCP	Dynamic Host Configuration Protocol
ESD	Electrostatic Discharge
FEC	Forward Error Correction
fps	frames per second
FTP	File Transfer Protocol
GND	Ground
h.264	video compression standard, also known as MPEG-4 AVC (Advanced Video Coding) or MPEG-4 Part 10
GPIO	General Purpose Input/Output
HTTP	Hyper Text Terminal Protocol
Hz	Hertz
I Frame	Intracoded Frames (pictures)
I/O	Input/Output
IGMP	Internet Group Messaging Protocol

IPTV	Internet Protocol Television
in.	inch
IP	Internet Protocol
kbps	kilobits per second (1 kbps =1,000 bits per second)
kg	kilogram
kHz	kilohertz
LAN	Local Area Network
MAC	Media Access Control
MB	Mega byte
Mbps	Megabits per second
MHz	Megahertz
MPEG	Motion Picture Experts Group
ms	millisecond
NTSC	National Television Standards Committee (USA)
P Frames	Predicted Frames (pictures)
PAL	Phase Alternating Line (Europe)
PHY	Phase Alternating Line (Europe)
PID	Packet Identifier
PT	Passive Tunnel
PTZ	Pan Tilt Zoom (device)
TCP/IP	Transmission Control Protocol/Internet Protocol
RAM	Random Access Memory
RCA	Radio Corporation of America
RFC	Request for Comments
RFC 1112	Host Extensions for IP Multicasting
RFC 2236	Internet Group Management Protocol, Version 2
RTSP	Real Time Streaming Protocol, based on Live555
SAP	Session Announcement Protocol
SMTP	Simple Mail Transfer Protocol

TTL	Time to Live (IP)
UDP	User Data Protocol
VDC	Volts Direct Current
Vrms	Volts Root Mean Square

Visionary Solutions, Inc.
4193 Carpinteria Avenue
Suite 11
Carpinteria, CA 93013
T: 805-566-5811
F: 805-566-5813

www.vsicam.com

March 2008