

PacketV™

Configuration Utility



Visionary Solutions, Inc.

©2007 Visionary Solutions, Inc. All rights reserved.

About This Guide

VSI recommends that you download the most recent version of this Manual from www.vsicam.com.

Intellectual Property Rights

Visionary Solutions, Inc. warrants that it, or its licensors, have good and clear title or right to license the PackeTV™ Configuration Utility and its components and to manufacture and distribute an AVN, free and clear of all liens and encumbrances.

No part of this document may be copied or reproduced in any form or by any means, electronic or mechanical, for any purpose without the express written permission of Visionary Solutions, Inc.

All rights, title, copyrights in and to the design, firmware object and source code of the an AVN belong exclusively to and are the property of Visionary Solutions, Inc.

All rights, title, and copyrights in and to the PackeTV™ Configuration Utility and any copies of the PackeTV™ Configuration Utility belong exclusively to and are the property of Visionary Solutions, Inc.

Visionary Solutions, Inc., subject to the terms and conditions of an agreement with the Licensing Administrator MPEGLA, L.L.C., has been granted sublicense under all MPEG-2 Essential Patent(s) in the MPEG-2 Patent Portfolio to make, have made, use, and sell, offer for sale or otherwise distribute PackeTV™ Configuration Utility (MPEG-2 Decoding Software) and the AVN unit (MPEG-2 Transport Stream Product).

ANY USE OF THIS PRODUCT OTHER THAN CONSUMER PERSONAL USE IN ANY MANNER THAT COMPLIES WITH THE MPEG-2 STANDARD FOR ENCODING VIDEO INFORMATION FOR PACKAGED MEDIA IS EXPRESSLY PROHIBITED WITHOUT A LICENSE UNDER APPLICABLE PATENTS IN THE MPEG-2 PATENT PORTFOLIO, WHICH LICENSE IS AVAILABLE FROM MPEG LA, L.L.C., 250 STEELE STREET, SUITE 300, DENVER, COLORADO 80206.

Limited Liability

In no event shall Visionary Solutions, Inc. be liable, whether in contract, tort, or otherwise, to OEM or Customers for (a) any damages resulting from loss of use, data or profits howsoever arising hereunder in relation to or in connection with Visionary Solutions, Inc. Software, (b) any special, indirect, incidental or consequential damages, even if Visionary Solutions, Inc. has been advised of the possibility thereof. Visionary Solutions, Inc.'s total liability in contract, tort or otherwise arising out of, in connection with or in relation to the Software or otherwise under this Agreement shall be limited to the amount paid to Visionary Solutions, Inc. or and authorized Visionary Solutions, Inc. reseller for the Visionary Solutions, Inc. Software or Hardware for a Customer in the 12 month period immediately preceding the event which has given rise to the liability.

The contents of this document are subject to revision without notice due to continued progress in methodology, design, and manufacturing. Visionary Solutions, Inc. shall have no liability for any error or damages of any kind resulting from the use of this document.

Trademark Acknowledgements

All trademarks or registered trademarks are properties of their respective owners.

Visionary Solutions, Inc.
4193 Carpinteria Ave
Suite 11
Carpinteria, CA 93013
T:805-566-5811
F:805-566-5813
www.vsicam.com

PackeTV™ Configuration Utility User's Manual February 9, 2007 Release 1.0.0

Contents

Chapter 1 Getting Started	1
1.1 Introduction	1
1.2 Installing the Software	1
Chapter 2 Using the PackeTV™ Configuration Utility	3
2.1 Discovering AVNs on the Network	3
2.2 Changing IP Properties	3
2.3 Updating the Firmware	4
2.4 Mass Configuration Dialog	5
Chapter 3 Connecting to the Network	13
3.1 DHCP IP Configuration	13
3.2 Static IP Configuration	13
3.3 Viewing an AVN on the Network	14
Chapter 4 PackeTV™ Configuration Utility Menus	15
4.1 Main Configuration Menu	15
4.2 AVN Properties	17
4.3 Firmware Update	18
4.4 Mass Configuration	19

Chapter 1 Getting Started

1.1 Introduction

The PackeTV™ Configuration Utility is a multifunction application that securely manages all Visionary Solutions, Inc. (VSI)-designed IPTV products. Network administrators can easily discover all the AVNs on a Local Area Network (LAN), change AVN IP properties (IP Address, Netmask, Gateway, and DHCP), update an AVN's firmware, and configure the encoding parameters on multiple AVNs simultaneously.

This chapter provides instructions on installing the software; Chapter 2 provides instructions on using discovering the AVNs, changing IP properties, updating AVN firmware files, and mass configuring a group of AVNs; Chapter 3 provides tips on ensuring that your AVN is properly connected to your network; and Chapter 4 provides additional information on the Utility menus and dialogs.

1.2 Installing the Software

Note: All hardware connections should be in place before you start the PackeTV™ Configuration Utility.

To install the software:

1. Close all Windows programs prior to starting the setup program.
2. **Installing PackeTV™ Configuration Utility from the CD.** If autorun is enabled, the CD will automatically launch the installation. If autorun is not enabled, explore the contents of the CD and double click **VisionarySolutionsSoftwareAndDocumentationSetup.exe** to begin installation.
3. **Downloading PackeTV™ Configuration Utility.** If the CD is not available, you can download the install file **VisionarySolutionsSoftwareAndDocumentation Setup.msi** from the web. Go to www.vsicam.com/index.php?p=iptv_updates.

If the target PC does not have internet access, go to the Backup Install folder on the CD and select the install file, **VisionarySolutionsSoftwareAndDocumentationSetup.msi**. Note that the CD install file is likely to be older than the version available from the web with the **VisionarySolutionsSoftwareAndDocumentationSetup.exe**. Internet access is required to get the most current version of the PackeTV™ Configuration Utility.

4. **The PackeTV™ Configuration Utility Installation Wizard.** Read the Welcome page and click **Next**.
5. **Select Features.** Select/check PackeTV™ Configuration Utility. Click **Next**.

6. **Software License Agreement.** Read the Software License Agreement. If you accept the terms of the license, select "I accept the license agreement" and click **Next** to proceed. If you do not accept the terms, click **Cancel** to exit the installation; no files will be copied.
7. **Destination Location.** Choose where you would like to install PackeTV™ Configuration Utility files. By default, the files will be installed in a directory named Visionary Solutions in the Program Files directory. Click **Next**.
8. **Start the Installation.** Click **Next** to begin installation.
9. **PackeTV™ Configuration Utility Successfully Installed.** Click **Finish** to exit the installation.

Chapter 2 Using the PackeTV™ Configuration Utility

The PackeTV™ Configuration Utility works in conjunction with Visionary Solutions, Inc. (VSI)'s IPTV hardware. This chapter describes how to discover all the AVNs on the LAN, change AVN IP properties (IP Address, Netmask, Gateway, and DHCP), update an AVN's firmware, and configure the encoding parameters on multiple AVNs simultaneously using the Mass Configuration dialog.

2.1 Discovering AVNs on the Network

Discovering an AVN consists of sending a multicast message over a selected network and displaying a list of the AVNs that send a response to the message in the AVNs on Network list. (Refer to *4.1 Main Configuration Menu* for more detailed information on discovering AVNs on the network.)

Discover AVNs on a selected network in one of these ways:

1. **Start the PackeTV™ Configuration Utility.** This discovers all AVNs on the network specified by the Networks drop-down list.
2. **Change the network the PackeTV™ Configuration Utility is searching.** If the PC is connected to more than one network, selecting a different network from the Network drop-down list causes a new discovery to occur.
3. **Discover AVNs on the Network.** To "discover" AVNs on the network using the PackeTV™ Configuration Utility's Config menu, select **Config> Discover**.

If you do not see the AVN and you know that it is properly connected to the network, you may have a switch or router on the network preventing the multicast message from properly getting through, refer to *Chapter 3 Connecting to the Network*.

If the AVN's firmware version is pre-1.47, update the firmware to the latest version, refer to *2.3 Updating the Firmware*.

2.2 Changing IP Properties

Use the AVN Properties dialog to change the IP Address, Netmask, Gateway, DHCP, Name, and Location properties of an AVN unit. (Refer to *4.2 AVN Properties* for more detailed information on changing an AVN's IP properties.)

Note: AVN200's with a firmware version of pre-1.28 will only be able to edit the IP Address property.

1. Start the PackeTV™ Configuration Utility. A list of AVNs will display in the AVNs on Network list in order of serial number.
2. If there is more than one network connected to the PC, select the network from the drop-down list and a new list of AVNs will display in the AVNs on Network list.
3. To view or change the IP properties of an AVN in the AVNs on Network list, highlight the AVN and click **Properties**, or double-click the AVN on the list.

Note: If you decide to modify the IP properties of your AVN, you will not be able to use DHCP to assign an IP Address to your AVN.

4. Ensure that DHCP is set to Off.
5. Enter the IP Address, Netmask, Gateway, Name, and/or Location values for your AVN.
6. Enter the Administrative Username and Password values for the selected AVN.
7. Click **OK** to update the selected AVN with the newly entered values, or **Cancel** to prevent any changes from taking effect.

2.3 Updating the Firmware

Use the AVN Firmware Update dialog to update the firmware files of an AVN unit on the network, either individually or as a selected group depending upon the assigned Usernames and Passwords. (Refer to *4.3 Firmware Update* for more detailed information on updating an AVN's firmware.)

1. Download the latest firmware file at www.vsicam.com/index.php?p=iptv_updates.
2. Start the PackeTV™ Configuration Utility. Go to the Firmware Update dialog by selecting **Firmware Update** from the Config menu.
3. Click **Browse**, or type in the location of the new AVN firmware file in the Firmware File Path text box.
4. From the AVNs on Network list, check each AVN unit that you would like to update with the new firmware file.
5. If the AVN that you are updating does not appear on the AVNs on Network list and you know that it is on the Network, you can add it to the list manually:
 - a. Locate the Add AVN to List area on the AVN Firmware Update dialog.

- b. Enter the IP address in the edit box and click the **Add** button.

Note: *Pre-1.47 firmware versions do not always respond to the Discover command.*

Note: *If the firmware version is pre-1.28, the exact version will not display on the list.*

6. Under Authentication, enter the Username/Password.

A valid Username and Password is required to update an AVN's firmware. Note that only units with identical Usernames and Passwords can be updated at one time. If different AVNs have different Usernames and Passwords, they must have their firmware updated in separate update "passes."

Note: *If the AVN has not been configured with a Username and Password, the update will fail.*

7. Click the **Update Firmware** button. The Update Status will display the progress of the update for each AVN unit that was checked as it is being processed. The Color Code next to the AVN unit's check box in the AVNs on Network list will also update to reflect whether the firmware was completed or if an error was encountered. The Color Code box presents a legend for the status of the firmware update.

2.4 Mass Configuration Dialog

Use the Mass Configuration Dialog to make changes to groups of selected AVNs. (Refer to [4.4 Mass Configuration](#) for more detailed information on using the Mass Configuration tool.)

To update a group of AVNs using the Mass Configuration dialog:

1. From the PackeTV™ Configuration Utility screen, see [4.1 Main Configuration Menu](#), click the **Mass Configuration** button. This opens the Mass Configuration screen.
2. Select the AVN(s) to configure by clicking on the checkbox on the far left side of the AVN's row. One or all the AVNs can be selected for configuration assuming they all have the same authentication (Username/Password). The icon of that row will turn blue to indicate that it is selected.
3. Select the desired **Save Options** and **Stream Status** options.
4. Enter valid authentication information for the selected AVNs. All AVNs to be configured at one time must have the same Username/Password. Proper authentication is required to change settings on an AVN.

5. Select the desired settings and values to use for configuration. There are three different configuration setting groups: Video, Audio, and Advanced Options, and they can be viewed by selecting their corresponding button. To enable a specific configuration setting within a group, mark the checkbox in the top-left-hand corner. In the Mass Configuration menu above, the Bitrate setting in the Video group is enabled and its value set to 3800000 (3.8 Megabits per second). Once enabled, set the value as desired. Follow these steps and enable and set as many of the configuration settings as desired from one or more of the configuration setting groups (Video, Audio, Advanced Options).
6. Select the **Configure** button. Configuration will now begin. Upon a successful configuration, the icon of selected AVN will turn green. Unsuccessful configurations are indicated by a red icon. If there were one or more errors during configuration, these errors will be reported in a pop-up dialog, listed by AVN IP address.

Chapter 3 Connecting to the Network

This chapter provides basic network protocol information and how to view your AVN on a network.

3.1 DHCP IP Configuration

The AVN has Dynamic Host Configuration Protocol (DHCP) turned on as the factory default. If your network has a DHCP server on it, the AVN will automatically acquire an IP address.

To view your AVN's IP address, and ensure that it is properly connected to your network, follow these steps:

1. Launch PackeTV™ Configuration Utility. This application will automatically discover and list all AVNs on the LAN.
2. Locate the AVN in question by its serial number. The DHCP-assigned IP address will be listed.

If you do not see the AVN and you know that it is properly connected to the network, you may have a switch or router on the network preventing the multicast message from properly getting through.

If an AVN200's firmware version is pre-1.47, update the firmware to the latest version, refer to [4.3 Firmware Update](#).

3.2 Static IP Configuration

If the AVN is not able to find a DHCP server, it will default to the IP Address, Subnet Mask and Gateway that are configured into the unit. The Factory Default is 192.168.1.253.

In order to configure your AVN with a static IP address, you will need to turn off its DHCP functionality (see Steps 4 and 5 below).

To assign a static IP address to the AVN, follow these steps:

1. Launch PackeTV™ Configuration Utility. A list of AVNs will display in the AVNs on Network list in serial number order.
2. If there is more than one network connected to the PC, select the network from the drop-down list and a new list of AVNs will display in the AVNs on Network list.
3. Highlight the AVN and click **Properties**, or double-click the AVN on the list.
4. Set DHCP to **Off**.
5. Enter the IP Address, Netmask, and/or Gateway values for your AVN.

6. Enter the Administrative Username and Password values for the selected AVN.
7. Click **OK** to update the selected AVN with the newly entered values, or **Cancel** to prevent any changes from taking effect.

For more information about setting the AVN's IP properties, refer to *2.2 Changing IP Properties*.

3.3 Viewing an AVN on the Network

If you have difficulty finding your AVN on the network, you may need to check the DHCP setting and/or the AVN's IP properties.

1. Check to see if you can view the AVN on your network:
 - a. Launch PackeTV™ Configuration Utility.
 - b. If the AVN you are expecting is not listed, verify that the correct network is listed in the Network drop-down list.
2. If you are troubleshooting an AVN200, check the firmware version. Firmware versions that are pre-1.47 may not always respond correctly to the Discover command and should be updated. Refer to *2.3 Updating the Firmware*.
3. Contact your network administrator to ensure that your client PC is properly connected to the network.
4. Ensure that the DHCP setting is correct for your network. For a network that does not have a DHCP server, follow the Static IP Configuration steps.
5. If you still do not see the AVN in the AVNs on Network list, you may have to move the AVN unit to a local segment on the network. Follow the steps *Connecting With a HyperTerminal Session* or *Connecting with a Telnet Session* in the appropriate AVN's user manual, to change the IP Address, Netmask, and/or Gateway properties of the AVN and then return it to the desired location.

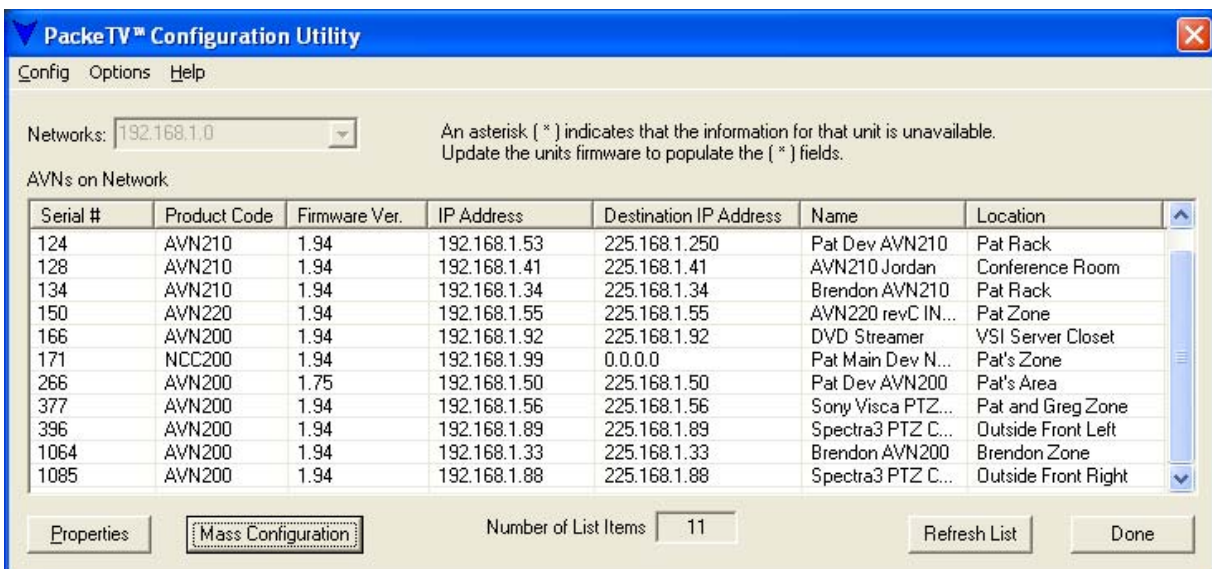
If you still do not see the AVN and you know that it is properly connected to the network, you may have a switch or router on the network preventing the Multicast message from properly getting through. Contact the network administrator to allow for a multicast message for discovery.

Chapter 4 PackeTV™ Configuration Utility Menus

This chapter provides additional information on the PackeTV™ Configuration Utility menus.

4.1 Main Configuration Menu

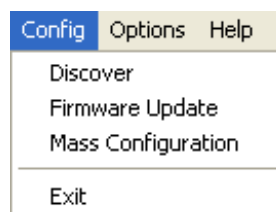
Upon startup, the Utility sends a multicast message across the selected network. All AVN units that respond to the message will display in the AVNs on Network list in Serial Number order by default. Click on a column heading to change the sort order. From this menu, you can select a unit and modify the AVN's IP Address, Netmask, Gateway, DHCP, and Name and Location parameters.



Entries that display an asterisk (*) indicate that the information is unavailable given the AVN's firmware version. Update the unit's firmware version in order to populate those fields.

Config

This menu selection has four options: Discover, Firmware Update, Mass Configuration, and Exit.



Discover – This option causes a new multicast message to occur. Some networks have limitations and restrictions on Multicast packets. If a newly added AVN unit is not listed in the AVNs on Network list after clicking the Discover option, there may be a switch or router on the network preventing the multicast message from properly getting through.

Contact the network administrator to allow a broadcast for discovery, or move the AVN onto a local segment of the network to configure it, then return the unit to the desired location (refer to *Chapter 3 Connecting to the Network*).

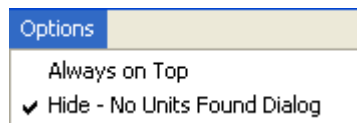
Firmware Update – Opens the AVN Firmware Update dialog box. Refer to *2.3 Updating the Firmware*.

Mass Configuration – Opens a dialog that displays a list of all AVNs on the given network and their current settings. Refer to *2.4 Mass Configuration Dialog*.

Exit – The Exit option closes the PackeTV™ Configuration Utility.

Options

This opens an Options menu.



Always on Top – Designates the viewing area window to be the top most window.

Hide - No Units Found Dialog – This toggles the use of the No Units Found pop-up dialog.

Help

Displays the current version information of the PackeTV™ Configuration Utility.

Networks

This field displays the IP Address of the network connected to the PC running the PackeTV™ Configuration Utility. If there is more than one network connected to the PC, the network IP Addresses will display in a drop-down list. When a different network is selected, a Multicast message will be sent to discover all of the AVN units on that network and display the in the AVNs on Network list.

AVNs on Network

This field displays all of the AVN units on the network in serial number order (by default) with their corresponding IP address. To change the properties of an AVN unit, highlight an AVN on the list and click the **Properties** button, or double-click an AVN on the list to open the AVN Properties dialog box.

Properties

This button opens an AVN Properties dialog box for the highlighted AVN. The AVN Properties dialog box is used to change the IP properties of the selected AVN.

- Mass Configuration** Opens the Mass Configuration dialog box. Refer to *2.4 Mass Configuration Dialog*.
- Number of List Items** Displays the number of items in the AVNs on Network list.
- Refresh List** Resends the Multicast message across the selected network and repopulates the list with all AVNs responding.
- Done** This button closes the PackeTV™ Configuration Utility menu.

4.2 AVN Properties

Use the AVN Properties dialog box to configure a selected AVN's IP properties. AVN200s with a firmware version of pre-1.28 will only be able to edit the IP Address property.

If you decide to modify the IP properties of your AVN, you will not be able to use DHCP to automatically assign an IP address to your AVN.

Refer to *2.2 Changing IP Properties* for more information on how to change IP properties. After entering your changes to this dialog box, click OK for them to take effect.

AVN Properties

Unit's Serial Number: 217

Configurable Properties

IP Address: 192 . 168 . 1 . 88

Netmask: 255 . 255 . 255 . 0

Gateway: 192 . 168 . 1 . 1

DHCP: Off On

Name: Spectra3 PTZ

Location: Front Right

Valid Username/Password Required

Username:

Password:

OK Cancel

Units Serial Number	Displays the serial number of the selected AVN.
IP Address	Displays the current IP address of the selected AVN. To change the IP Address, enter a new value.
Netmask	Displays the current netmask of the selected AVN. To change the Netmask, enter a new value.
Gateway	Displays the current gateway of the selected AVN. To change the Gateway, enter a new value.
DHCP	Displays the current DHCP state of the selected AVN. To change the DHCP state of the selected AVN, select the desired option (On or Off).
Name	Enter a description that helps to identify the AVN.
Location	Enter a description that helps to identify the location of the AVN.
Username	Enter the Administrative Username for the selected AVN.
Password	Enter the Administrative Password for the selected AVN.
OK	Click OK to update the selected AVN with the new entered values.
Cancel	No changes will be applied and the dialog box will close.

4.3 Firmware Update

The AVN Firmware Update dialog allows the Administrator to update the firmware files of an AVN unit on the network, either individually or as a selected group depending upon the assigned Usernames and Passwords.

Firmware File Path	Displays the path to the AVN firmware file (*.avn). Click the Browse button to search for other folders.
Authentication	A valid Username and Password is required to configure an AVNs settings. Note that only units with identical Usernames and Passwords can be configured at one time. If different AVNs have different Usernames and Passwords, they must be configured in separate configuration "passes."
Add AVN to List	This feature can be used if the AVN that you want to configure is not responding to discover calls and does not appear on the AVNs on Network list. If you know that the AVN is on the Network, you can add it to the list manually by entering the IP address in the edit box and clicking the Add button.

AVN Firmware Update

Firmware File Path - enter the path to the AVN firmware file (*.avn):
 An asterisk (*) indicates that the information for that unit is unavailable. Update the units firmware to populate the (*) fields.

Authentication
 Username:
 Password: Please enter the Username and Password associated with the units to be updated. If units to be updated have different Username/Passwords then updates will need to be done separately for each "group" of units with the same Username and Password.
 NOTE: Username and Password are case sensitive.

AVNs on Network - check item(s) to be updated.

Serial #	Product Code	Firmware Ver.	IP Address	Name	Location
<input type="checkbox"/> 128	AVN210	1.94	192.168.1.41	AVN210 Jordan	Conference Room
<input type="checkbox"/> 134	AVN210	1.94	192.168.1.34	Brendon AVN210	Pat Rack
<input type="checkbox"/> 150	AVN220	1.94	192.168.1.55	AVN220 revC INTEL	Pat Zone
<input type="checkbox"/> 166	AVN200	1.94	192.168.1.92	DVD Streamer	VSI Server Closet
<input type="checkbox"/> 171	NCC200	1.94	192.168.1.99	Pat Main Dev NCC200	Pat's Zone
<input checked="" type="checkbox"/> 266	AVN200	1.75	192.168.1.50	Pat Dev AVN200	Pat's Area
<input type="checkbox"/> 396	AVN200	1.94	192.168.1.89	Spectra3 PTZ Cam	Outside Front Left
<input checked="" type="checkbox"/> 1064	*(AVN200)	1.49	192.168.1.33	*	*
<input type="checkbox"/> 1085	AVN200	1.94	192.168.1.88	Spectra3 PTZ Cam	Outside Front Right

Add AVN to List
 Enter IP Address:

Color Code:
 - do not update
 - attempt update
 - update succeeded
 - update failed

Update Firmware Click the **Update Firmware** button to implement changes made to checked AVNs. The Update Status will display the progress of the update for each AVN unit that was checked as it is being processed. The Color Code next to the AVN unit's check box in the AVNs on Network list will also update to reflect whether the firmware was completed or if an error was encountered.

Color Code A legend for the color icons.

4.4 Mass Configuration

The Mass Configuration dialog displays a list of all AVNs on the given network and their current settings. This list can be used to display AVNs by product type and location. This list also enables you to select which AVNs to configure and displays the configuration results as indicated by the colored icons.

Serial #	Product Code	Firmware Ver.	IP Address	Dest Port	Dest IP	Name	Location	
<input type="checkbox"/>	124	AVN210	1.94	192.168.1.53	1024	0.0.0.0	AVN210_124	anywhere
<input type="checkbox"/>	128	AVN210	1.94	192.168.1.41	50596	225.168.1.42	AVN210 Jordan	Conference Room
<input type="checkbox"/>	134	AVN210	1.75	192.168.1.34	1024	0.0.0.0	AVN210_134	anywhere
<input type="checkbox"/>	164	AVN220	1.94	192.168.1.203	50918	225.168.1.203	AVN220_164	anywhere
<input type="checkbox"/>	166	AVN200	1.94	192.168.1.92	50696	225.168.1.92	DVD Streamer	VSI Server Closet
<input checked="" type="checkbox"/>	266	AVN200	1.94	192.168.1.50	50612	225.168.1.50	Pat Dev AVN200	Pat's Area
<input checked="" type="checkbox"/>	377	AVN200	1.94	192.168.1.56	1024	0.0.0.0	AVN200_377	anywhere
<input type="checkbox"/>	396	AVN200	1.94	192.168.1.89	50690	225.168.1.89	Spectra3 PTZ Cam	Outside Front Left
<input checked="" type="checkbox"/>	1064	AVN200	1.94	192.168.1.33	50000	225.0.0.0	Brendon's AVN200	Desk
<input checked="" type="checkbox"/>	1085	AVN200	1.94	192.168.1.88	50688	225.168.1.88	Spectra3 PTZ Cam	Outside Front Right

Select/Unselect All This button checks or unchecks all of the items in the list. An item in the list must be checked in order to have its settings changed. It is just an easy way to check all the checkboxes in the list, or uncheck them as the case may be.

Show Products by Type

This button allows the Mass Configuration List to only show products based on product type (AVN200, AVN210, or AVN220).

Show Products by Location

This button allows the Mass Configuration List to only show products based upon the product location field. This is useful when attempting to configure all the units in a certain location, like all the AVN220s in certain chassis. This assumes the AVN location names have been set. (Refer to *4.2 AVN Properties*.)

Configure Selected Items

Color Code A legend for the color icons.

Refresh List This button causes the Mass Configuration List to be updated with the current AVN setting values.

Number of List Items

Displays the number of items in the AVNs on Network list.

Save Options Specifies whether or not the configuration settings should be saved to the AVN Flash memory and whether the AVN should be rebooted. Some settings require a reboot to take effect.

Stream Status Specifies what the AVN's streaming status should be changed to. Selecting **Stop AVN(s)** causes all checked AVNs to stop streaming/encoding. Selecting **Start AVN(s)** causes all checked AVNs to start streaming/encoding if stopped, or to stop and restart if already streaming/encoding. Selecting **No Change** leaves stopped AVNs stopped and streaming AVNs streaming.

Authentication A valid Username and Password is required to configure an AVNs settings. Note that only units with identical Usernames and Passwords can be configured at one time. If different AVNs have different Usernames and Passwords, they must be configured in separate configuration "passes."

Add AVN to List This feature can be used if the AVN that you want to configure is not responding to discover calls and does not appear on the AVNs on Network list. If you know that the AVN is on the Network, you can add it to the list manually:

Enter the IP address in the edit box and click the **Add** button.

Configure This button causes all checked/selected AVNs to be configured with the selected setting values. Note that only enabled/selected configuration settings will be updated on the AVNs. For example, if the only setting enabled is Video Bitrate, then all the selected AVNs will only have their Video Bitrate changed. No other settings will be changed. In this way you can configure selected AVNs with selected settings (Video, Audio, and Advanced Options).

Exit This button closes the Mass Configuration screen.

Video, Audio, and Advanced Options

These buttons change which configuration settings are displayed below. In order to configure an AVN's setting, the associated setting must first be enabled using the checkbox in the top left-hand corner. Once enabled the settings value will be used to set the selected AVNs value when the **Configure** button is clicked. All settings can be enabled and their values used, but some settings are not valid for certain product types. For example, AVN220's do not support Audio's Tone/Bass/Treble, so attempting to configure an ANV220 with these settings will fail.

Visionary Solutions, Inc.
4193 Carpinteria Avenue
Suite 11
Carpinteria, CA 93013
T: 805-566-5811
F: 805-566-5813

www.vsicam.com

February 2007